

Municipal Information Form

Municipality Borough of Allentown
County Monmouth
Address PO Box 487

Allentown NJ 08501

Contact Name and Title Terry Brown, Shade Tree Commission Chairperson
Phone # 609 213 6306
Fax # and E-mail terrybrown@optonline.net
Organization Name Allentown Shade Tree Commission

Mayor's Signature

Date of Management Plan _____

Submission 2/24/2025

Time Period Covered in

Management Plan 01/01/2025 – 12/31/2029

Official Office Use Only

The above-named municipality/county has made formal application to the New Jersey Forestry Service. I am pleased to advise you that after our review, the NJ Forestry Service has concluded that this plan meets the standards set forth by the State and the NJ Community Forestry Council and is approved for the period covered.

Signed Todd Wyckoff 11/3/2025
State Forester Approved Date

Section 1. Introduction and Background

a. Mission Statement

The Borough of Allentown wishes to maintain and promote a healthy, safe and sustainable shade tree resource that will physically, economically and aesthetically benefit the community and its residents in the most cost effective manner possible.

b. Liability Statement

Although street trees are an asset to the community, it is inevitable that as they mature, they will require care, maintenance and eventual replacement. Care and maintenance, in addition to planting "the right tree in the right place," can help ensure that community trees not only contribute to the environmental and economic vitality of the area, but also reduce the potential hazards to public safety. However, 80% of our street trees are in the County Right of Way (ROW) thus limiting our control. Also the County has stated that trees must be planted at least 15' from the streets in their ROW while most buildings in the Historic District are about 20' from the street. Roughly one quarter of the street lawns in the Borough ROW are less than 3' wide. With these major constraints our community may not be able to meet each need of our community forest immediately. Therefore, it is the intent of this plan to focus available resources toward the greatest need in a step-by-step fashion, working towards a healthy forest with commensurate reductions in risk to public safety.

The major thrust of this plan is to encourage and support residents in planting trees on their property as well as increase canopy coverage in our various parks.

We feel, by taking the steps outlined in the Management Plan we will garner public support for plan implementation and demonstrate the long-term benefits to the environment and public safety.

We also want to become more proactive in the management and care of our trees. Through inventories and hazard assessments, we will position our Shade Tree Commission to take corrective action prior to structural tree failure and other hazardous tree related conditions. It is acknowledged that not all hazardous conditions will be predicted. Adequate maintenance and care will reduce the probability of tree failure, but unexpected events may still occur.

Following this Management Plan will demonstrate that Borough of Allentown is devoting reasonable levels of resources in a planned manner to reduce the number of tree related accidents and thereby reduce its exposure to liabilities and increase public safety.

c. Community Overview

i. Overview

The Borough has a total population of about 1,730 with a land area of 384 acres. About a third of the land is open space, made up of part woodland and part open field. The rest is residential with some retail. The housing stock is diverse ranging from small to substantial on small to

Key to Map 1, List of Borough Parks with size in acres

POPULATION - 1Master_Plan_A x

https://allentownboronj.com/vertical/sites/7748EEEB-2391-4653-8B6A-4A64C85A6D79/uploads/1Master_Plan_Adopted_Document_June_4_2018.pdf

199 of 209 90%

Page 4 of 8

Local Unit: BOROUGH OF ALLENTOWN County: MONMOUTH COUNTY

All lands held for recreation and conservation purposes (1) must be described by their block and lot identification numbers as shown on the current, official tax map and (2) keyed to a current, legible, official map of the local government unit. The official map used for this ROSI is named _____ and is dated _____, 20____. Please refer to page 1 of this document for more detailed instructions.

Lands Held in Fee Simple for Recreation and Conservation Purposes (Use Page 4A - Fee Simple cont'd as necessary for additional lands)

Map Key	Municipal Location per Tax Records	Name of Park / Facility	Block No.	Lot No.	Total Lot Acres	Partial Lot? (Y / N) Note 1	GA Encumbered Acres Note 2	Co-Owners? (Y / N) Note 3	Green Acres Funded? (F / U) Note 4	EIFP Funded? (Y / N) Note 5	Notes
1	28 PEARL STREET	PEARL ST. PLAYGROUND	6	14	0.1289	N	0.13	N	N	N	CHANGE THE NAME TO SARA BARNES PARK
2	32 PEARL STREET	PEARL ST PLAYGROUND	6	15	0.0793	N	0.08	N	N	N	CHANGE THE NAME TO SARA BARNES PARK
3	LAKEVIEW DRIVE	DR. FARMER PARK	14	22, 23,	2.8	N	2.80	N	N	N	CHANGE NAME TO FARMER PARK; LAKEVIEW SHORELINE
4	SOUTH MAIN STREET	CONNIES MILL POND	14	33	12.91	N	12.91	N	N	N	CHANGE NAME TO CONNIES MILL POND; CHANGE TYPE TO LAKE
5	71 SOUTH MAIN STREET	PETE SENSI PARK	14	34, 35, 4	0.33	N	0.33	N	N	N	CHANGE NAME TO CONNIES MILL POND; CHANGE TYPE TO PARK; DOCK/LAKE
6	ELLISDALE ROAD	BYRON JOHNSON PARK	15	26.02	5	N	5.00	N	N	N	CHANGE OWNER TO UPPER FREEHOLD; CHANGE ACRES TO 5.03 ACRES; CHANGE TYPE TO PARK
7	SOUTH MAIN STREET	CONSERVATION AREA	17	35.02	5.03	N	5.03	N	Y	N	CHANGE NAME TO HERITAGE PARK; CHANGE ACRES TO 5.03; CHANGE TYPE TO PARK
8	GORDON STREET	HERITAGE PARK	17	30.02	33.6	N	33.60	N	Y	N	CHANGE NAME TO HERITAGE PARK; CHANGE ACRES TO 33.60
9	MILL POND	LAKEVIEW DRIVE	24	20		N	0.00	N	N	N	REMOVE DUPLICATION
10	DOCTORS CREEK-REAR	UNKNOWN	17	1	4.43	N	4.43	Y	Y	N	CHANGE NAME TO BREZA; CHANGE ACRES TO 4.43; CHANGE OWNERS TO NJDEP/ALLENTOWN/UPPER
11	INDIAN RUN	UNKNOWN	17	100	1.866	N	1.89	Y	Y	N	CHANGE NAME TO BREZA; CHANGE ACRES TO 1.896 ACRES; CHANGE OWNERS TO NJDEP/ALLENTOWN/UPPER
12	BREZA	UPPER FREEHOLD	44	1.02	33.056	N	33.06	Y	Y	N	CHANGE NAME TO PHASE BREZA; CHANGE LOT TO 1.02
13	BREZA	UPPER FREEHOLD	45	1.03	31.97	N	31.97	Y	Y	N	CHANGE OWNERS TO NJDEP/ALLENTOWN/UPPER
14	BREZA	UPPER FREEHOLD	45	1.05	24.91	N	24.91	Y	Y	N	CHANGE NAME TO PHASE BREZA; CHANGE OWNERS TO NJDEP/ALLENTOWN/UPPER FREEHOLD
15	BREZA	UPPER FREEHOLD	44	2	44.21	N	44.21	Y	Y	N	CHANGE NAME TO PHASE BREZA; CHANGE OWNERS TO NJDEP/ALLENTOWN/UPPER FREEHOLD
16	SOUTH MAIN ST-REAR	UNKNOWN	17	37.01	0.356	N	0.36	N	Y	N	CHANGE NAME TO HERITAGE PARK
17	32 1/2 NORTH MAIN ST	SGT. GEORGE ASHBY MEMORIAL PARK	7	18, 35	2.8	N	2.80	N	N	N	ACQUIRED ON 12/12/16.

Total of all fee simple Green Acres-encumbered acres on this page only: **203.50**

Total of all fee simple Green Acres-encumbered acres from all pages of this ROSI: **203.50**

Total of all Green Acres-encumbered acres from all pages of this ROSI: **203.50**

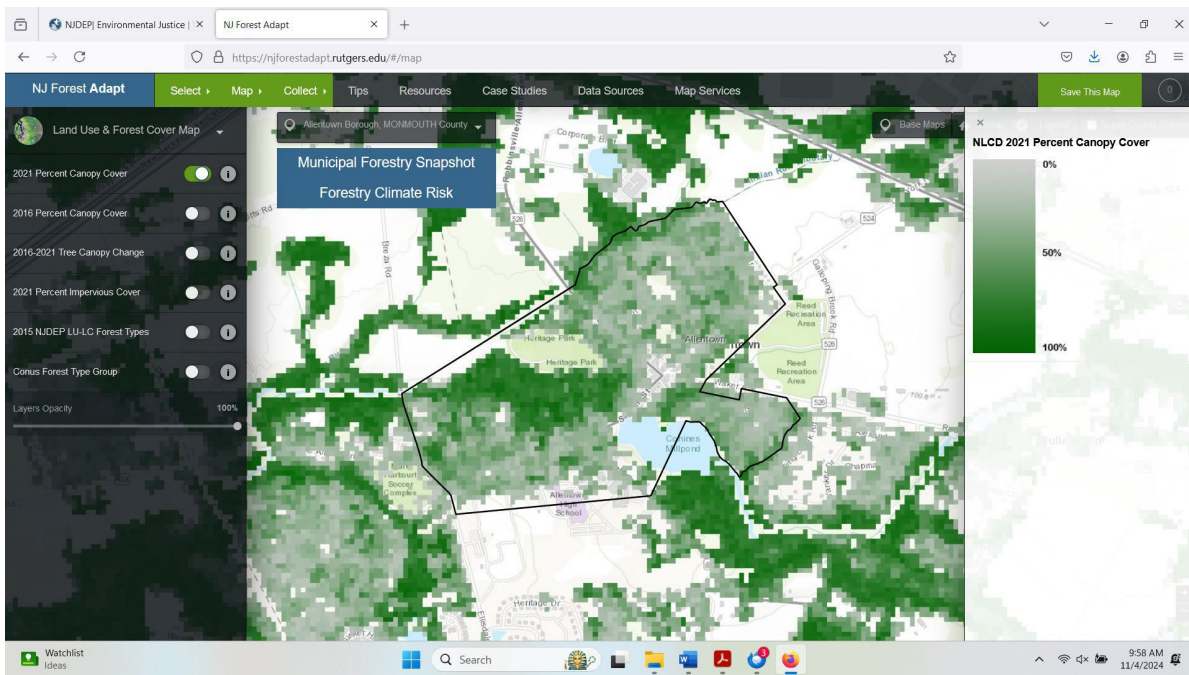
Note 1: For properties partially held for recreation/conservation (e.g. municipal complex), please supply a survey or tax map with the park boundaries to scale, showing the recreation/conservation area.
 Note 2: For entire properties, please supply acreage of entire property. For partial lots, please provide the recreation/conservation acreage only.
 Note 3: Does any other entity have an undivided interest in this property? List co-owner in Notes column.
 Note 4: F = Funded by Green Acres; U = Unfunded (i.e., no Green Acres funding utilized)
 Note 5: Were Environmental Infrastructure Trust Program funds used to acquire all or part of this property?

S&P 500 +0.29%

9:54 AM 11/11/2024

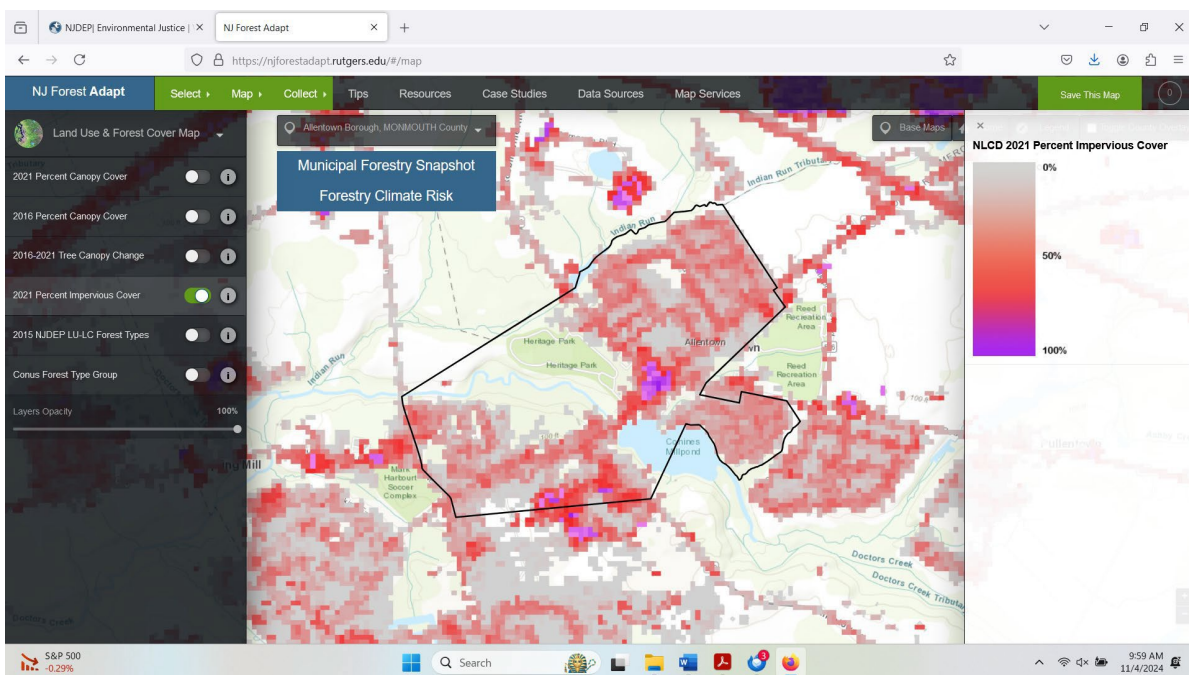
Note that the Map Key numbers 12 through 15 are not within the Borough's boundaries.

Map 2 –Borough percent canopy cover



According to the data from Map 7 the Borough has a 32% canopy coverage. The major areas of no coverage represent Heritage and Ashby Parks, the business district, 2 cemeteries and school grounds.

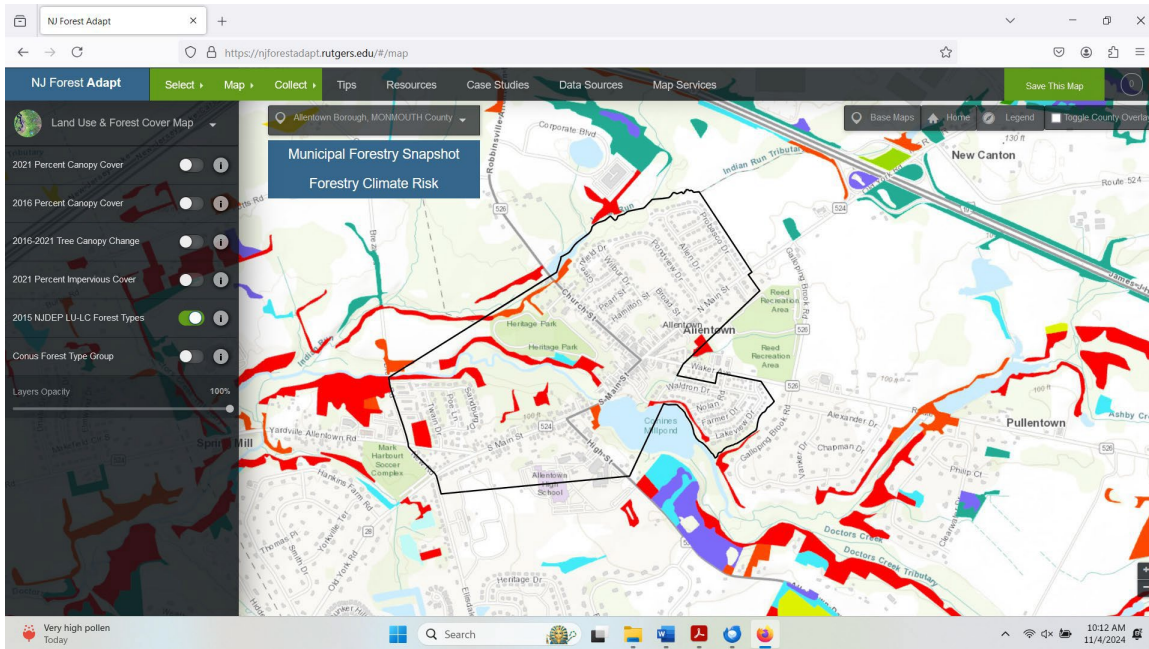
Map 3 –Borough percent impervious cover



As expected, the impervious cover is centered around the county roads, Church St., Main St. and High St., the

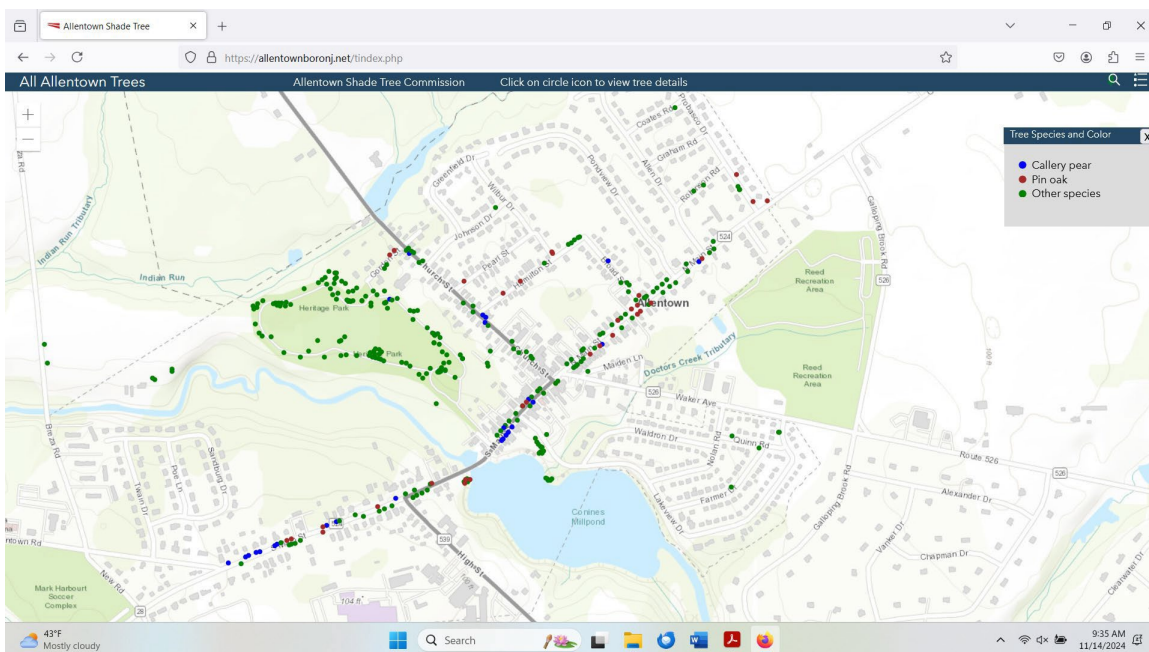
residential developments outside of the Borough center and the school property.

Map 4 –Forested areas within the Borough (in red)



Roughly half of the forested area is privately owned. Borough owned areas are around Heritage Park, Sensi Park and Lakeview Drive/Dr. Farmer Park.

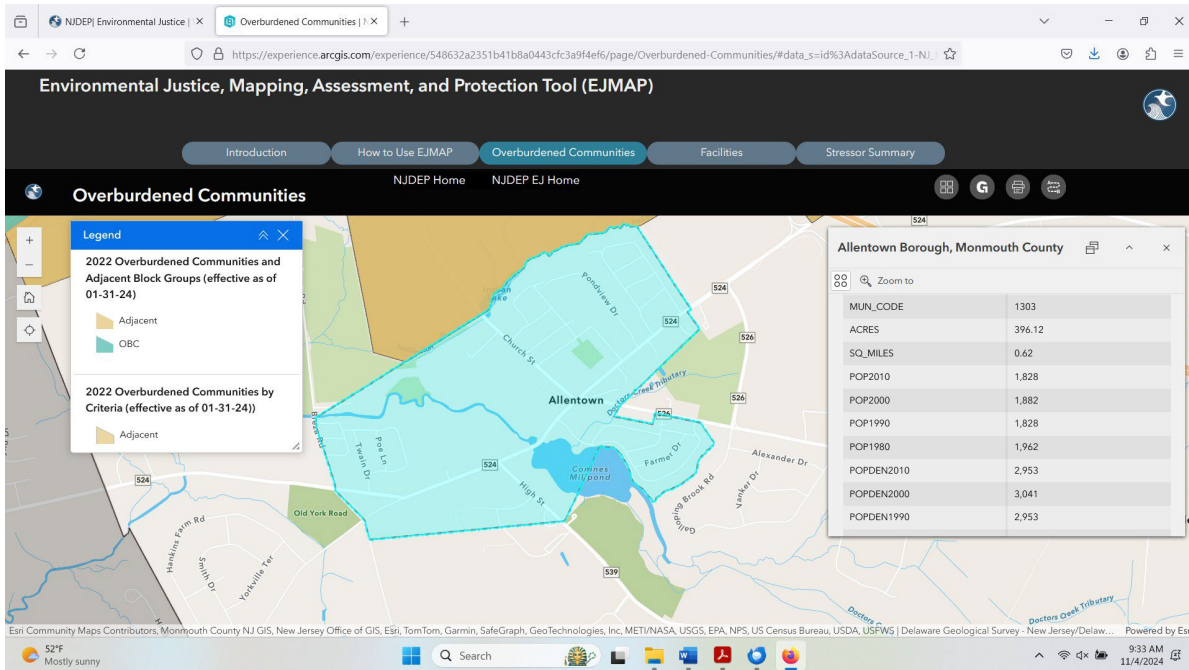
Map 5 –Street Trees (County and Borough ROWs) and Trees in Parks/Open Spaces



This map was produced from our online tree database at <https://allentownboronj.net/index.php?p=trees&hsp=all&d=n> This map highlights Callery pear and Pin oak as

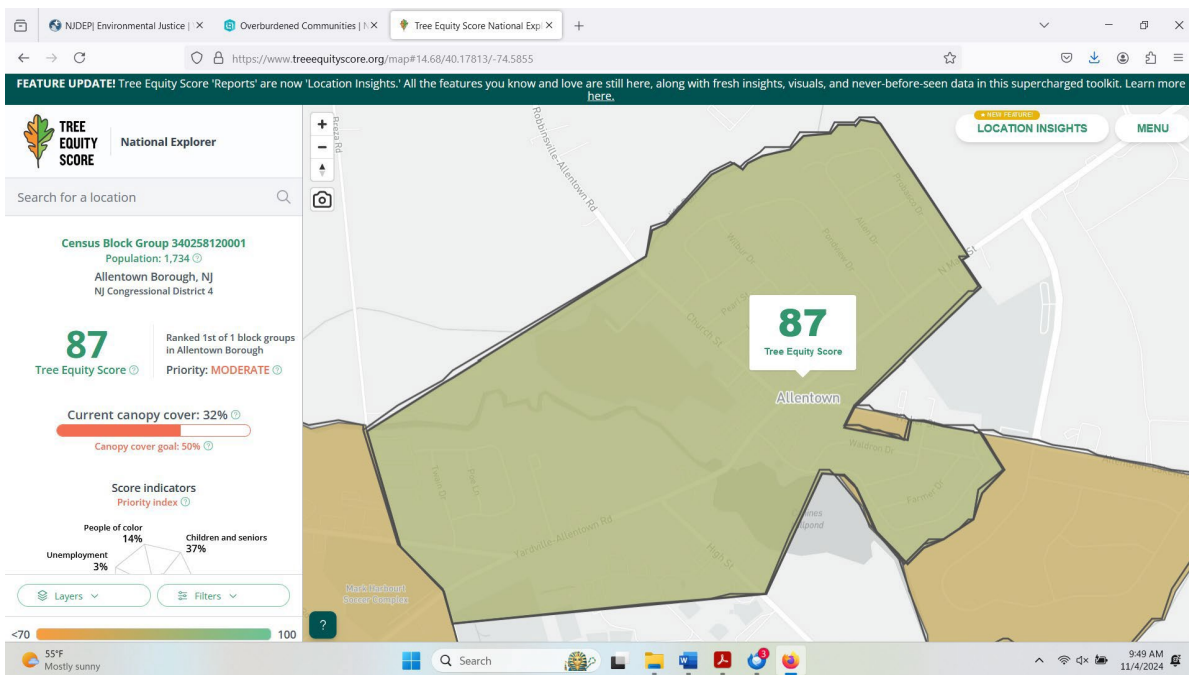
they represent 15% and 20% respectively of our street trees.

Map 6 - Overburdened/EJ communities

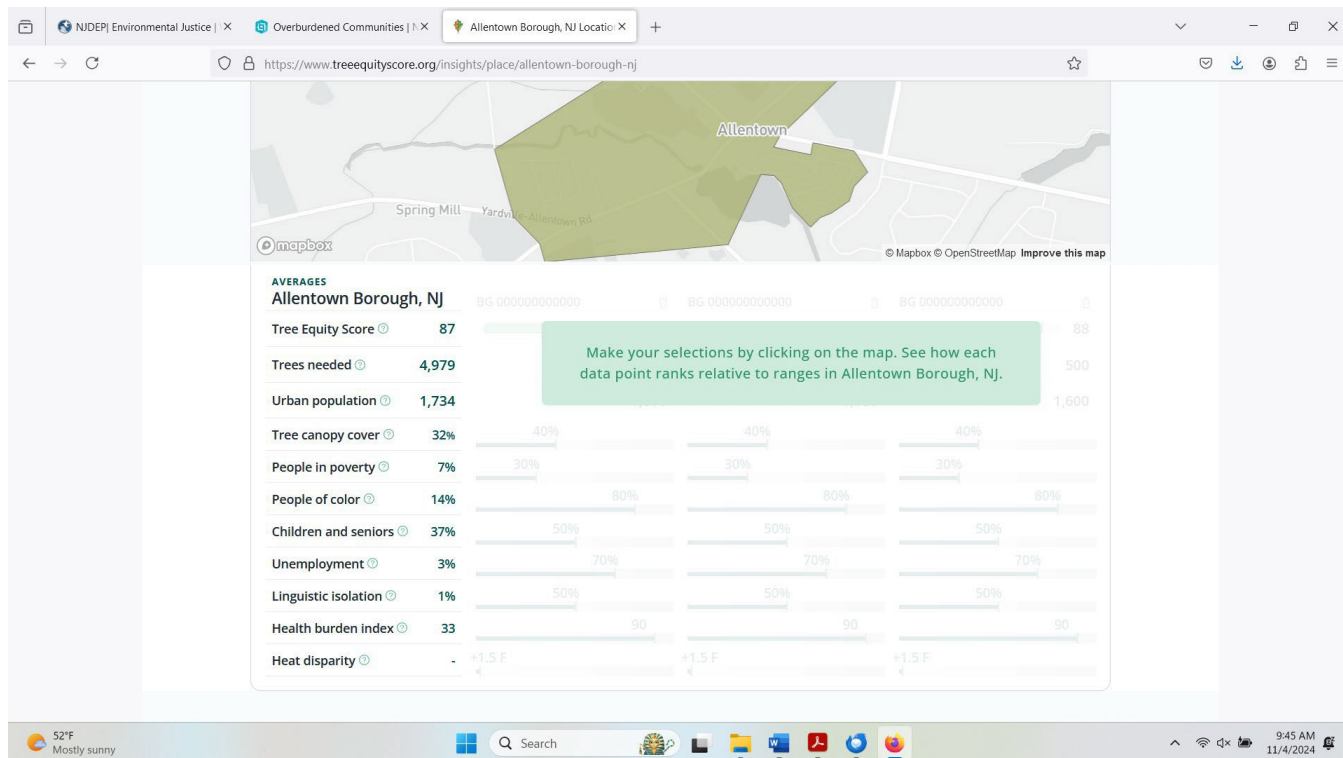


There are no Overburdened/EJ community areas identified within the Borough. There is an adjacent area identified in neighboring Robbinsville (Mercer County).

Map 7 – Tree Equity Score and Canopy Cover



Breakdown of numbers for Map 7 – Tree Equity Score and Canopy Cover



iii. History, Accomplishments, & Barriers to Success

There were 37 tree plantings and 110 tree removals during the previous CFMP. Tree pruning is not tracked. The removals were high because of sidewalk and roadway replacements and the ageing out of the Pin oaks.

There is a Commemorative Tree program where residents can pay to have a memorial tree planted. 13 such trees have been planted.

There were 26 hazardous tree assessments performed. Some assessments involved multiple trees at a location (from 1 up to 20). DPW, for public trees, and residents, for trees on private property, report trees with possible hazardous conditions to the Borough Administrator who then passes the information to the STC which does an assessment. The assessment is then sent to the Code Enforcement officer to action as required. All current members of the STC have been trained in hazardous tree assessments.

Tree planting is typically done by DPW staff as we prefer to plant containerized trees. We contract out for larger B&B tree plantings. Removals are contracted out except for small trees as, by ordinance, the trees must be stump ground which we don't have the resources to do.

We were able to support the goals of the previous CFMP except for the last 2 years. We were not able to plant as many trees as desired. The cause of this was staffing problems within DPW,

mainly for watering, and the truck mounted watering tank was out of commission. Because of this and the drought conditions of the past 2 years we had a moratorium on tree planting. Except for the drought conditions, these problems have been resolved.

d. Urban Forest Structure, Composition, and Trends

In 2010 a complete inventory of the Borough's street trees was undertaken and a paper inventory report was produced. In 2017 we created an online inventory system and entered the 2010 data. We've used that system to update the inventory annually. In 2023 we started to inventory open canopy park trees. This was completed in 2024 with the exception of Ashby Park which is still in development. The inventory system allows for the tracking of all the data points listed in the "Minimum Inventory Requirements for Street Trees and other Open Canopy Trees" from Appendix 5 of the Community Forestry Management Plan Guidelines document although not all the data has been entered for the recently added data points. These will be updated going forward.

Appendix 1 contains reports pulled from the inventory system that was used in the following analysis. We've broken out the reports by Street Trees and Park Open Canopy Trees as we are severely constrained on managing Street Trees as 50% of the street lawns are in the County ROW and 25% are less than 3' wide.

1. Street Trees

There are 170 street trees.

These represent 33 species and are fairly evenly distributed around the Borough. There are 2 species that are overly represented (more than 10%), Pin oak (17%) and Callery pear (14%). There are 23 genera with 3 overly represented, Quercus (19%), Pyrus (14%) and Acer (14%) but none 20% or greater. There are 16 families represented with 1 overly represented (30% or greater), Rosaceae (32%). It is the large number of Callery pears that puts this over the 30% target. If it weren't for the Pin oaks and Callery pears we would be well within the 10-20-30 target. As it is we are fairly close. We just need to be mindful when planting new trees. Neither the Pin oaks or Callery pears are in our list of approved trees for planting.

The DBH range is fairly evenly distributed both geographically and numerically with the exception of those in the 2" range which represents 25% of the total. This is the result of the 2 Street Scape projects where sidewalks and roadways were completely replaced. This caused a lot of older larger trees to be removed and replaced with smaller younger ones.

We have not tracked height and condition but will do so going forward.

Since the 2010 inventory 110 street trees have been removed. About 75% were removed because of the Street Scape projects with the rest being removed because they became hazardous. Of the trees removed 35 were Callery pear (35%) and 25 were Pin oaks (22%). Most of the Pin oaks were removed because they became hazardous and not because of the Street Scape projects. The vast majority of the Pin oaks were planted at the same time and are dying off.

Given that only 25% of our street lawns are available for us to plant trees and most of those sites are already planted, our Street Tree management plan consists of pruning as required, removal of hazardous trees with replacement from our list of approved trees. This list is broken down by

width of street lawn, presence of utility lines and if native.

The trends in the structure, composition, condition, or distribution currently conform fairly well to our goals. Going forward, as the older Street Trees die off, the trends will deviate from our goals. Given the constraints on new Street Lawn plantings we will have to make up for this by planting in our parks and encourage residents to plant trees on their properties.

2. Park Open Canopy Trees

There are 142 Park Open Canopy trees.

These represent 52 species with only 1 species more than 10%, Red maple (11%). There are 35 genera represented with none greater than 20% with Acer coming closest with 16%. There are 20 families represented with none greater than 30% and none even greater than 20%. These are mostly in the Heritage and Ashby Parks (about 36 acres combined) and are fairly evenly distributed.

The DBH range is fairly evenly distributed both geographically and numerically with the exception of those in the 2” range which represents 50% of the total. These parks were originally mostly open fields purchased with Green Acres grants. We’ve been planting new trees every year resulting in a very young stock.

We have not tracked height and condition but will do so going forward.

As these trees weren’t inventoried until starting in 2023 we do not have any historical data to check for trends.

The 2 parks, Heritage and Ashby, had Borough approved plans developed when they were created. These plans included specific sites for tree planting. These plans did not include specific trees for those sites.

The trends in the structure, composition, condition, or distribution currently do not conform to our goals as we started with a blank slate. Our goal is to continue planting according to the plans as funds become available, selecting appropriate trees for the specific sites.

e. Overall Program Goals

1. Create and maintain a thriving, healthy, and resilient urban forest
2. Create a sense of community and support for our urban forest
3. Improve the quality of the tree resource for all members of our community

f. Plan Connections and Other Considerations

This CFMP is in complete alignment with the Borough’s Master Plan as the Master cites the CFMP as part of its Forested Areas and Native Vegetation section. Essentially the CFMP is part of the Master Plan.

The Parks and Public Spaces Committee’s Strategic Plan hasn’t been finalized but the CFMP is in alignment with what has been proposed so far and will continue to support it. A member of

the STC is on the Parks and Public Spaces Committee.

In 2018 STC used the i-Tree Storm program to train and prepare pre- and post- storm damage assessments. Every other year it reviews the i-Tree Storm data and trains any new STC participants in pre- and post-storm evaluations.

The Borough is outside the Pinelands extreme fuel hazard vegetation zones and the extreme fire risk areas. The Borough no longer has large areas of vegetation with high to extreme fuel rating. For the past 2 CFMPs wildfire protection was not included. With the drought conditions of the past 2 years and the potential for them continuing we will explore preparing a Community Wildfire Protection Plan in this 5-year management plan.

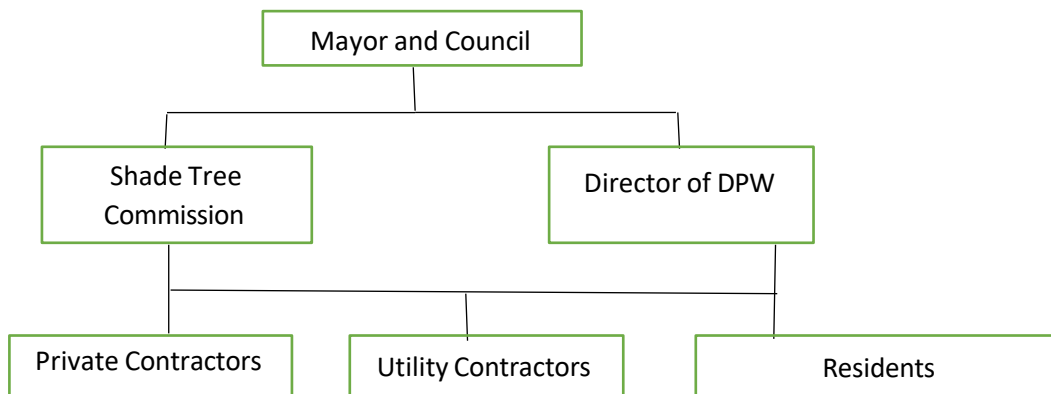
With about half of the Borough’s streets being in the County’s Right of Way it severely limits the Borough in managing street trees.

Threats to our urban forest, mainly the woodlands, include deer (primarily buck rub on newer plantings) and invasive species. We also have a problem with vandalism of newly planted trees. We’ve had 7 destroyed in the past year, representing 2% of the Borough’s tree stock. We’ve had most of the tree tags (26) in Heritage Park either broken or taken.

Section 2. Community Forestry Program Capacity

a. Community Forestry Program Administration

The administration of Borough of Allentown’s Shade Tree Management Program is a cooperative effort of the Shade Tree Commission, Mayor and Council, the Department of Public Works, private contractors, utility contractors and Allentown’s residents as shown below:



Mayor and Council

The Mayor and Council are responsible for appointing the 5 members and 2 alternates of the Shade Tree Commission. One Borough Council member serves as the liaison to the Shade Tree Committee.

The Mayor and Council annually appropriates such sums, as it may deem necessary, to train the volunteer/staff to maintain approved status, and carry out the responsibilities of the Community

Forestry Management Plan.

Borough Council Liaison

Reviews plans and policies submitted by the Shade Tree commission and makes recommendations to Council. Recommends the annual budget of the Shade Tree Advisory Commission to the Borough Council.

Shade Tree Commission

The Shade Tree Commission is a five member plus two alternates, volunteer commission appointed by the Mayor and Council. They are the commission for all community trees on municipal streets, ROW's, parks or other properties. Their duties include:

Advise regarding the planting, removal and maintenance of Allentown's trees.

Develop and recommend the policies and goals that will preserve and develop Allentown's tree resource.

Implement the Community Forestry Management Plan.

Perform public outreach to foster better understanding and care for Allentown's trees on both public and private properties.

Assist in the handling of complaints or requests received for work on Allentown's trees.

Review annual budgets with the Municipal Manager and submit them to the Mayor and Council.

Residents

Continue to report all requests for planting, removal or maintenance to the Borough Administrator who will inform the Shade Tree Commission, DPW or Monmouth County Shade Tree Division for trees in the County's ROW.

Assist in the follow-up care to any newly planted trees on adjacent properties or in County or Allentown ROW's.

Department of Public Works

Reviews requests for tree planting, removal or maintenance and makes the necessary inspections.

For Borough trees, DPW may hire a Private Contractor for pruning or removal of larger trees.

Inspects all work performed by the public works crew and private contractors on Allentown properties if required and at the request of STC.

Utility Contractors

Must notify the Monmouth County Engineering Department of Shade Tree Division, Allentown Director of Public Works, Mayor or Council of any planned work.

Must follow all American National Standards Institute (ANSI) arboricultural practices and guidelines.

May assist the DPW and Monmouth County Shade Tree crews in clearing trees to meet their line clearance requirements.

Private Contractors

Generally, most tree care and maintenance activities are conducted by Monmouth County Shade Tree crews but when difficult or electric utility conflicts arise, private contractors may be deemed necessary on a case-by-case basis. Private contractors are responsible for the following.

Provide proof of appropriate insurance, licenses, certifications as necessary to the appropriate Allentown official.

Report to Allentown official prior to work beginning and after work is completed at the end of each day.

Complete all work in a safe and timely manner according to all applicable safety standards set by OSHA or ANSI as they pertain to tree care operations.

Follow all current arboricultural practices and guidelines.

Report all hazards or problems directly to the Allentown contact official.

Monmouth County Board of Freeholders

Tree management along County roadways will be referred back to Monmouth County. The care and maintenance of those trees will follow the plan outlined in Monmouth County's Shade Tree Management Plan.

The Board of Freeholders is responsible for the appointment of the 5-member Monmouth County Shade Tree Commission.

The Freeholders authorizes new policies and plans and approves the Shade Tree Division's annual budget.

Monmouth County Shade Tree Division Head

Reviews and approves requests for tree planting, removal or maintenance in the County ROW. Inspects and approves the works performed by County Shade Tree Division crews.

Develops annual plans and budget requests for County tree care costs.

b. Partnerships (NGOs, nonprofit organizations, interdepartmental)

The Shade Tree Commission works with the DPW, Environmental Commission, Parks and Public Spaces Planning Committee and the Green Team. It shares members with all of them and all work together. All of the above have overlapping responsibilities, each with its own focus. DPW performs work to support the goals of the other entities. Environmental Commission promotes the conservation and development of the natural resources of the Borough. Parks and Public Spaces Planning Committee makes, adopts, and recommends to the governing body a Strategic Plan for the Borough's parklands and other public spaces. The Green Team promotes sustainable practices. The STC also works with the Allentown Garden Club on special projects.

c. Training

The following lists the training taken by members of the Borough's Shade Tree Commission and DPW in the past 5 years. We've had at least 3 CORE trained people and at least 2 people with at least 8 CEUs during each year of the current CFMP. Below lists the instructor, the number of people attending and the total number of CEUs received during the current CFMP.

Rutgers -

Intro to Plant ID (1 person, 11 CEUs)

Invasive Plants (1 person, 5.5 CEUs)

Roadside and Right-of-Way Vegetation Management (1 person, 4 CEUs)

NJAPZA & NJSTF -

Tier A MS4 Storm Water Tree Ordinance (1 person, 4.5 CEUs)

How to Read a Tree (1 person, 1 CEU)

Trees Do Not Read Textbooks (1 person, 1 CEUs)

Landscape Zombies (1 person, 1 CEUs)

NJUCF-

Stewardship Grants (1 person, 1 CEU)

STEW-MAP Survey (1 person, 1 CEU)

USEPA -

Invasive Woody Plant Management (1 person, 1 CEU)

Consultant -

Assessment of Tree Condition and Hazards (6 people, 12 CEUs)

Basic Pruning Seminar (6 people, 12 CEUs)

Tree ID Seminar (5 people, 10 CEUs)

All the members of the Shade Tree Commission have been trained in all the basic tasks they need to perform. As new members join we will need to bring them up to speed as well as keep all members up to date with new information such as planning for and handling drought conditions.

CORE Training (1 person)

We have 3 people with CORE Training, 1 from DPW and 2 from the Shade Tree Commission.

We will continue to train at least 2 people with at least a total of 8 CEUs each year of this CFMP.

d. Budget

Statement of 5-year Tree Budget		CFMP Budget
Administration	Municipal Salaries	\$25,000 (extrapolated from previous CFMP)
	Fringe	
	Indirect Costs	
	Volunteer Contribution (Rate can be found at www.independentsector.org)	\$36,875 (220 hours per year x 33.45)
	Other	
UCF Stewardship	Planting	
	Pruning	
	Removal	
	Insect/Disease Management	
	Stump Removal	
	Other	\$30,000 (We don't break down by the above categories. This is the total for all the above.)
Education and Outreach	Training and Education (Municipal/County Employee)	\$1,000
	Training and Education (Volunteer)	\$2,500
	Public Outreach	\$5,000
	Other	\$700
Total		\$101,075

e. Equipment

The Borough has the following equipment for tree management: woodchipper, hedge trimmer, 2 chainsaws, pole saw and a 250 gallon watering tank. With the recent purchase of the watering tank we have all the equipment that we currently need.

Section 3. Community Engagement and Wellbeing

We utilized the Borough's capacities, such as the website, newsletter and social media as well as local media and events such as the Spring Fling and the Fall Festival, Arbor Day celebrations, and partnered with entities such as the Environmental Commission, Parks and Open Spaces Planning Committee and the Allentown Garden Club and Lions Club to promote awareness.

This CFMP was developed by the STC with input from the various committees with which it shares members, DPW and a Borough Council representative. The STC held public meetings discussing the CFMP.

There are no overburdened communities within the Borough. There are some streets lacking trees but because of a lack of adequate sized street lawns and constraints placed by the County on its ROW there is little that can be done to improve this situation. It should be noted that no residence is more than a 15 minute walk from one of our larger parks.

The approved plan will be announced via the Borough's newsletter and website where it will be available to all.

Section 4. Plan Implementation

a. Elements, Objectives, and Action Items

Element 1: Training and Education

Objective 1: Meet NJUCF requirements for CORE and CEU training

Action Item 1a: Have at least 2 members of the STC receive training for at least 8 CEU's per year

Action Item 1b: Have at least 2 STC members and 1 Borough employee/official CORE trained

Element 2: Community Forest Ordinance(s)

Objective 1: Update the Protection/Replacement of Tree Ordinance (Appendix 2) and the Shade Tree Commission Establishing Ordinance (Appendix 3) as necessary

Action Item 1a: Update the ordinances to comply with new regulations and requirements

Element 3: Tree Resource Management

Objective 1: Tree Inventory (all action items tie to Section 1d, paragraphs 1-3)

Action Item 1a: Update the database to reflect changes to the tree stock

Action Item 1b: Update the online system to include current and mature heights

Action Item 1c: Inventory trees and update the database to include current and mature heights

Objective 2: Tree Risk Assessment (all action items tie to Section 1d, paragraph 4)

Action Item 2a: Perform hazardous tree assessments as requested. For hazardous trees not on

Borough property report to Code Enforcement Officer for action otherwise work with DPW for removal/mitigation

Objective 3: Tree Maintenance (all action items tie to Section 1d, paragraph 5)

Action Item 3a: Appraise DPW about Borough trees and County Shade Tree about County trees needing maintenance/removal

Action Item 3b: Ensure that newly planted trees are adequately watered

Action Item 3c: Organize days to prune and weed as required

Objective 4: Tree Planting (all action items tie to Section 1d, paragraph 6)

Action Item 4a: Continue to implement the Heritage Park tree planting plan. As the budget permits or Commemorative Tree funds become available purchase and plant trees according to the pre-approved plan, trying to evenly plant in the 5 sections until each section reaches its designed capacity

Action Item 4b: Review the small parks (other than Heritage and Ashby) and other Borough property for potential tree plantings and create a plan for tree planting

Objective 5: Tree Protection (all action items tie to Section 1d, paragraph 5)

Action Item 5a: Work with DPW to mulch around park trees to prevent mowing damage

Action Item 5b: Work with DPW to install deer guards on vulnerable trees

Objective 6: Invasive Species Management

Action Item 6a: Continue work on management of Callery pear (*Pyrus calleryana*), in Heritage Park

Action Item 6b: Work on management of other invasive species in Heritage Park as resources permit

Objective 7: Woodland Management (all action items tie to Section 1d, paragraph 3)

Action Item 7a: Determine if a Forestry Management Plan is appropriate for the Borough's woodlands and if so develop and implement a stewardship plan

Element 4: Community and Capacity

Objective 1: Building Capacity

Action Item 1a: Organize "clean up" days in the Borough's public spaces with the community. This would involve light pruning, weeding and trash removal. Also use this opportunity to promote the awareness of the value of trees

Action Item 1b: Develop a plan to encourage and support residents to plant trees on their property

Action Item 1c: Seek funding to help subsidize residents to plant trees

Action Item 1d: Partner with groups like the Garden Club to help promote tree planting

Action Item 1e: Maintain, update and expand the functions of our online tree inventory to promote awareness of the community's trees and their value

Action Item 1f: Update the Heritage Park and Main Street tree trails and create new promotional material

Action Item 1g: Promote the Commemorative Tree program to help raise funds for more tree plantings

Action Item 1h: Maintain Tree City status by meeting the annual requirements. At the beginning of the year contact the Borough Clerk to have an Arbor Day Proclamation created. Ensure that there is at least \$2 per capita, including volunteer hours, for tree care

Objective 2: Education and Outreach Events

Action Item 2a: Host community events that promote and celebrate urban forest resources, such as Arbor Day, the Borough's Spring Stroll and Fall Festival

Objective 3: Outreach Materials

Action Item 3a: Develop and publish outreach materials to encourage and support residents to plant trees on their property

Action Item 3b: Post updates and newsletters on our website and social media accounts

Element 5: Disaster Planning

Objective 1: Help ensure the Borough is positioned for storm readiness, response, and recovery and wildfire protection

Action Item 1a: Review i-Tree Storm data and train any new STC participants in pre- and post-storm evaluations to be performed in 2025 and every other year thereafter

Action Item 1b: Determine if a Community Wildfire Protection Plan is appropriate for the Borough and, if so, work with the community to develop a plan

b. Activity Schedule

First Year, 2025

Training and Education

Continue to meet CEU education and CORE accreditation requirements. Ensure that 3 people (2 STC and 1 DPW) are CORE trained. Ensure that at least 2 people have a combined 8 CEU's. Track CEU's and recommend courses/conferences.

Community Forest Ordinance(s)

Review and update ordinances as required.

Tree Resource Management

Update the inventory database to reflect changes to the tree stock

Update the online system to include current and mature tree heights

Inventory trees and update the database to include current and mature heights

Perform hazardous tree assessments as requested and report to appropriate office for action

Appraise DPW about Borough trees and County Shade Tree about County trees needing maintenance/removal

Ensure that newly planted trees are adequately watered

Organize days to prune and weed as required

Continue to implement the Heritage Park tree planting plan planting at least 2 trees

Review the small parks (other than Heritage and Ashby) and other Borough property for potential tree planting sites and create a plan for tree planting

Work with DPW to mulch around park trees to prevent mowing damage

Work with DPW to install deer guards on vulnerable trees

Continue work on management of Callery pear in Heritage Park

Work on management of other invasive species in Heritage Park as resources permit

Determine if a Forestry Management Plan is appropriate for the Borough.

Community and Capacity

Organize “clean up” days in the Borough’s public spaces with the community

Develop a plan to encourage and support residents to plant trees on their property

Seek funding to help subsidize residents to plant trees

Partner with groups like TAVI and the Garden Club to help promote tree planting

Maintain, update and expand the functions of our online tree inventory to promote awareness of the community’s trees and their value

Update the Heritage Park and Main Street tree trails and create new promotional material

Promote the Commemorative Tree program to help raise funds for more tree plantings

Maintain Tree City status by meeting the annual requirements. At the beginning of the year contact the Borough Clerk to have an Arbor Day Proclamation created. Ensure that there is at least \$2 per capita, including volunteer hours, for tree care

Host community events that promote and celebrate urban forest resources, such as Arbor Day, the Borough’s Spring Stroll and Fall Festival

Develop and publish outreach materials to encourage and support residents to plant trees on their property

Post updates and newsletters on our website and social media accounts

Disaster Planning

Review i-Tree Storm data and train any new STC participants in pre- and post-storm evaluations

Determine if a Community Wildfire Protection Plan is appropriate for the Borough

Second Year, 2026

Training and Education

Continue to meet CEU education and CORE accreditation requirements. Ensure that 3 people (2 STC and 1 DPW) are CORE trained. Ensure that at least 2 people have a combined 8 CEU's. Track CEU's and recommend courses/conferences.

Community Forest Ordinance(s)

Review and update ordinances as required.

Tree Resource Management

Update the inventory database to reflect changes to the tree stock

Perform hazardous tree assessments as requested and report to appropriate office for action

Appraise DPW about Borough trees and County Shade Tree about County trees needing maintenance/removal

Ensure that newly planted trees are adequately watered

Organize days to prune and weed as required

Continue to implement the Heritage Park tree planting plan planting at least 3 trees

Implement the plan for small parks and other Borough property for at least 4 tree plantings

Work with DPW to mulch around park trees to prevent mowing damage

Work with DPW to install deer guards on vulnerable trees

Continue work on management of Callery pear in Heritage Park

Work on management of other invasive species in Heritage Park as resources permit

If appropriate for the Borough's woodlands develop a stewardship plan

Community and Capacity

Organize "clean up" days in the Borough's public spaces with the community

Implement the plan to encourage and support residents to plant trees on their property

Seek funding to help subsidize residents to plant trees

Partner with groups like TAVI and the Garden Club to help promote tree planting

Maintain, update and expand the functions of our online tree inventory to promote awareness of the community's trees and their value

Promote the Heritage Park and Main Street tree trails

Promote the Commemorative Tree program to help raise funds for more tree plantings

Maintain Tree City status by meeting the annual requirements. At the beginning of the year contact the Borough Clerk to have an Arbor Day Proclamation created. Ensure that there is at least \$2 per capita, including volunteer hours, for tree care

Host community events that promote and celebrate urban forest resources, such as Arbor Day, the Borough's Spring Stroll and Fall Festival

Continue to publish outreach materials to encourage and support residents to plant trees on their property

Post updates and newsletters on our website and social media accounts

Disaster Planning

If a Community Wildfire Protection Plan is considered appropriate for the Borough work with the community to develop a plan

Third Year, 2027

Training and Education

Continue to meet CEU education and CORE accreditation requirements. Ensure that 3 people (2 STC and 1 DPW) are CORE trained. Ensure that at least 2 people have a combined 8 CEU's. Track CEU's and recommend courses/conferences.

Community Forest Ordinance(s)

Review and update ordinances as required.

Tree Resource Management

Update the inventory database to reflect changes to the tree stock

Perform hazardous tree assessments as requested and report to appropriate office for action

Appraise DPW about Borough trees and County Shade Tree about County trees needing maintenance/removal

Ensure that newly planted trees are adequately watered

Organize days to prune and weed as required

Continue to implement the Heritage Park tree planting plan planting at least 3 trees

Implement the plan for small parks and other Borough property planting at least 4 trees

Work with DPW to mulch around park trees to prevent mowing damage

Work with DPW to install deer guards on vulnerable trees

Continue work on management of Callery pear in Heritage Park

Work on management of other invasive species in Heritage Park as resources permit

If appropriate for the Borough's woodlands implement the stewardship plan

Community and Capacity

Organize "clean up" days in the Borough's public spaces with the community

Implement the plan to encourage and support residents to plant trees on their property
Seek funding to help subsidize residents to plant trees
Partner with groups like TAVI and the Garden Club to help promote tree planting
Maintain, update and expand the functions of our online tree inventory to promote awareness of the community's trees and their value
Promote the Heritage Park and Main Street tree trails
Promote the Commemorative Tree program to help raise funds for more tree plantings
Maintain Tree City status by meeting the annual requirements. At the beginning of the year contact the Borough Clerk to have an Arbor Day Proclamation created. Ensure that there is at least \$2 per capita, including volunteer hours, for tree care
Host community events that promote and celebrate urban forest resources, such as Arbor Day, the Borough's Spring Stroll and Fall Festival
Continue to publish outreach materials to encourage and support residents to plant trees on their property
Post updates and newsletters on our website and social media accounts

Disaster Planning

Review i-Tree Storm data and train any new STC participants in pre- and post-storm evaluations
If a Community Wildfire Protection Plan is appropriate for the Borough work with the community to implement the plan

Fourth Year, 2028

Training and Education

Continue to meet CEU education and CORE accreditation requirements. Ensure that 3 people (2 STC and 1 DPW) are CORE trained. Ensure that at least 2 people have a combined 8 CEU's.
Track CEU's and recommend courses/conferences.

Community Forest Ordinance(s)

Review and update ordinances as required.

Tree Resource Management

Update the inventory database to reflect changes to the tree stock
Perform hazardous tree assessments as requested and report to appropriate office for action
Appraise DPW about Borough trees and County Shade Tree about County trees needing maintenance/removal
Ensure that newly planted trees are adequately watered
Organize days to prune and weed as required
Continue to implement the Heritage Park tree planting plan planting at least 3 trees

Implement the plan for small parks and other Borough property planting at least 4 trees

Work with DPW to mulch around park trees to prevent mowing damage

Work with DPW to install deer guards on vulnerable trees

Continue work on management of Callery pear in Heritage Park

Work on management of other invasive species in Heritage Park as resources permit

If appropriate for the Borough's woodlands implement the stewardship plan

Community and Capacity

Organize "clean up" days in the Borough's public spaces with the community

Implement the plan to encourage and support residents to plant trees on their property

Seek funding to help subsidize residents to plant trees

Partner with groups like TAVI and the Garden Club to help promote tree planting

Maintain, update and expand the functions of our online tree inventory to promote awareness of the community's trees and their value

Promote the Heritage Park and Main Street tree trails

Promote the Commemorative Tree program to help raise funds for more tree plantings

Maintain Tree City status by meeting the annual requirements. At the beginning of the year contact the Borough Clerk to have an Arbor Day Proclamation created. Ensure that there is at least \$2 per capita, including volunteer hours, for tree care

Host community events that promote and celebrate urban forest resources, such as Arbor Day, the Borough's Spring Stroll and Fall Festival

Continue to publish outreach materials to encourage and support residents to plant trees on their property

Post updates and newsletters on our website and social media accounts

Disaster Planning

If a Community Wildfire Protection Plan is appropriate for the Borough work with the community to continue to implement the plan

Fifth Year, 2029

Training and Education

Continue to meet CEU education and CORE accreditation requirements. Ensure that 3 people (2 STC and 1 DPW) are CORE trained. Ensure that at least 2 people have a combined 8 CEU's. Track CEU's and recommend courses/conferences.

Community Forest Ordinance(s)

Review and update ordinances as required.

Tree Resource Management

Update the inventory database to reflect changes to the tree stock

Perform hazardous tree assessments as requested and report to appropriate office for action

Appraise DPW about Borough trees and County Shade Tree about County trees needing maintenance/removal

Ensure that newly planted trees are adequately watered

Organize days to prune and weed as required

Continue to implement the Heritage Park tree planting plan planting at least 3 trees

Implement the plan for small parks and other Borough property planting at least 4 trees

Work with DPW to mulch around park trees to prevent mowing damage

Work with DPW to install deer guards on vulnerable trees

Continue work on management of Callery pear in Heritage Park

Work on management of other invasive species in Heritage Park as resources permit

If appropriate for the Borough's woodlands implement the stewardship plan

Community and Capacity

Organize "clean up" days in the Borough's public spaces with the community

Implement the plan to encourage and support residents to plant trees on their property

Seek funding to help subsidize residents to plant trees

Partner with groups like TAVI and the Garden Club to help promote tree planting

Maintain, update and expand the functions of our online tree inventory to promote awareness of the community's trees and their value

Promote the Heritage Park and Main Street tree trails

Promote the Commemorative Tree program to help raise funds for more tree plantings

Maintain Tree City status by meeting the annual requirements. At the beginning of the year contact the Borough Clerk to have an Arbor Day Proclamation created. Ensure that there is at least \$2 per capita, including volunteer hours, for tree care

Host community events that promote and celebrate urban forest resources, such as Arbor Day, the Borough's Spring Stroll and Fall Festival

Continue to publish outreach materials to encourage and support residents to plant trees on their property

Post updates and newsletters on our website and social media accounts

Disaster Planning

Review i-Tree Storm data and train any new STC participants in pre- and post-storm evaluations to be performed in 2025 and every other year thereafter

If a Community Wildfire Protection Plan is appropriate for the Borough continue to work with the community to implement the plan

Appendix 1. Inventory (the online interface to the inventory database is at <https://allentownboronj.net/>)

Street Trees by Species:

Species	Total	Percent
Pin oak (<i>Quercus palustris</i>)	29	17.06
Callery pear (<i>Pyrus calleryana</i>)	25	14.71
Kwanzan cherry (<i>Prunus serrulata</i>)	14	8.24
American elm (<i>Ulmus americana</i>)	10	5.88
apple spp (<i>Malus</i>)	10	5.88
Sugar maple (<i>Acer saccharum</i>)	9	5.29
Black tupelo (<i>Nyssa sylvatica</i>)	6	3.53
Honeylocust (<i>Gleditsia triacanthos</i>)	6	3.53
serviceberry spp (<i>Amelanchier</i>)	6	3.53
Amur maackia (<i>Maackia amurensis</i>)	5	2.94
Norway maple (<i>Acer platanoides</i>)	5	2.94
Silver maple (<i>Acer saccharinum</i>)	5	2.94
Flowering dogwood (<i>Cornus florida</i>)	4	2.35
Ginkgo (<i>Ginkgo biloba</i>)	4	2.35
Littleleaf linden (<i>Tilia cordata</i>)	4	2.35
Japanese tree lilac (<i>Syringa reticulata</i>)	3	1.76
Paperbark maple (<i>Acer griseum</i>)	3	1.76
American sycamore (<i>Platanus occidentalis</i>)	2	1.18
Eastern redbud (<i>Cercis canadensis</i>)	2	1.18
European hornbeam (<i>Carpinus betulus</i>)	2	1.18
lagerstroemia spp (<i>Lagerstroemia</i>)	2	1.18
Northern red oak (<i>Quercus rubra</i>)	2	1.18
Red mulberry (<i>Morus rubra</i>)	2	1.18
Black cherry (<i>Prunus serotina</i>)	1	0.59
Boxelder (<i>Acer negundo</i>)	1	0.59
dogwood spp (<i>Cornus</i>)	1	0.59
Eastern hemlock (<i>Tsuga canadensis</i>)	1	0.59
Green ash (<i>Fraxinus pennsylvanica</i>)	1	0.59
Northern white cedar (<i>Thuja occidentalis</i>)	1	0.59
Norway spruce (<i>Picea abies</i>)	1	0.59
Red maple (<i>Acer rubrum</i>)	1	0.59
Sawtooth oak (<i>Quercus acutissima</i>)	1	0.59
Swamp white oak (<i>Quercus bicolor</i>)	1	0.59
	170	

Street Trees by Genus:

Genus	Total	Percent
Quercus	33	19.41
Pyrus	25	14.71
Acer	24	14.12
Prunus	15	8.82
Malus	10	5.88
Ulmus	10	5.88
Amelanchier	6	3.53
Gleditsia	6	3.53
Nyssa	6	3.53
Cornus	5	2.94
Maackia	5	2.94
Ginkgo	4	2.35
Tilia	4	2.35
Syringa	3	1.76
Carpinus	2	1.18
Cercis	2	1.18
Lagerstroemia	2	1.18
Morus	2	1.18
Platanus	2	1.18
Fraxinus	1	0.59
Picea	1	0.59
Thuja	1	0.59
Tsuga	1	0.59
	170	

Street Trees by Family:

Family	Total	Percent
Rosaceae	56	32.94
Fagaceae	33	19.41
Aceraceae	24	14.12
Fabaceae	13	7.65
Ulmaceae	10	5.88
Nyssaceae	6	3.53
Cornaceae	5	2.94
Ginkgoaceae	4	2.35
Malvaceae	4	2.35
Oleaceae	4	2.35
Betulaceae	2	1.18
Lythraceae	2	1.18
Moraceae	2	1.18
Pinaceae	2	1.18
Platanaceae	2	1.18
Cupressaceae	1	0.59
	170	

Street Trees by Family/Genus/Species:

Family	Genus	Species	Total
Aceraceae	Acer	Boxelder (<i>Acer negundo</i>)	1
Aceraceae	Acer	Norway maple (<i>Acer platanoides</i>)	5
Aceraceae	Acer	Paperbark maple (<i>Acer griseum</i>)	3
Aceraceae	Acer	Red maple (<i>Acer rubrum</i>)	1
Aceraceae	Acer	Silver maple (<i>Acer saccharinum</i>)	5
Aceraceae	Acer	Sugar maple (<i>Acer saccharum</i>)	9
Betulaceae	Carpinus	European hornbeam (<i>Carpinus betulus</i>)	2
Cornaceae	Cornus	dogwood spp (<i>Cornus</i>)	1
Cornaceae	Cornus	Flowering dogwood (<i>Cornus florida</i>)	4
Cupressaceae	Thuja	Northern white cedar (<i>Thuja occidentalis</i>)	1
Fabaceae	Cercis	Eastern redbud (<i>Cercis canadensis</i>)	2
Fabaceae	Gleditsia	Honeylocust (<i>Gleditsia triacanthos</i>)	6
Fabaceae	Maackia	Amur maackia (<i>Maackia amurensis</i>)	5
Fagaceae	Quercus	Northern red oak (<i>Quercus rubra</i>)	2
Fagaceae	Quercus	Pin oak (<i>Quercus palustris</i>)	29
Fagaceae	Quercus	Sawtooth oak (<i>Quercus acutissima</i>)	1
Fagaceae	Quercus	Swamp white oak (<i>Quercus bicolor</i>)	1
Ginkgoaceae	Ginkgo	Ginkgo (<i>Ginkgo biloba</i>)	4
Lythraceae	Lagerstroemia	lagerstroemia spp (<i>Lagerstroemia</i>)	2
Malvaceae	Tilia	Littleleaf linden (<i>Tilia cordata</i>)	4
Moraceae	Morus	Red mulberry (<i>Morus rubra</i>)	2
Nyssaceae	Nyssa	Black tupelo (<i>Nyssa sylvatica</i>)	6
Oleaceae	Fraxinus	Green ash (<i>Fraxinus pennsylvanica</i>)	1
Oleaceae	Syringa	Japanese tree lilac (<i>Syringa reticulata</i>)	3
Pinaceae	Picea	Norway spruce (<i>Picea abies</i>)	1
Pinaceae	Tsuga	Eastern hemlock (<i>Tsuga canadensis</i>)	1
Platanaceae	Platanus	American sycamore (<i>Platanus occidentalis</i>)	2
Rosaceae	Amelanchier	serviceberry spp (<i>Amelanchier</i>)	6
Rosaceae	Malus	apple spp (<i>Malus</i>)	10
Rosaceae	Prunus	Black cherry (<i>Prunus serotina</i>)	1
Rosaceae	Prunus	Kwanzan cherry (<i>Prunus serrulata</i>)	14
Rosaceae	Pyrus	Callery pear (<i>Pyrus calleryana</i>)	25
Ulmaceae	Ulmus	American elm (<i>Ulmus americana</i>)	10
			170

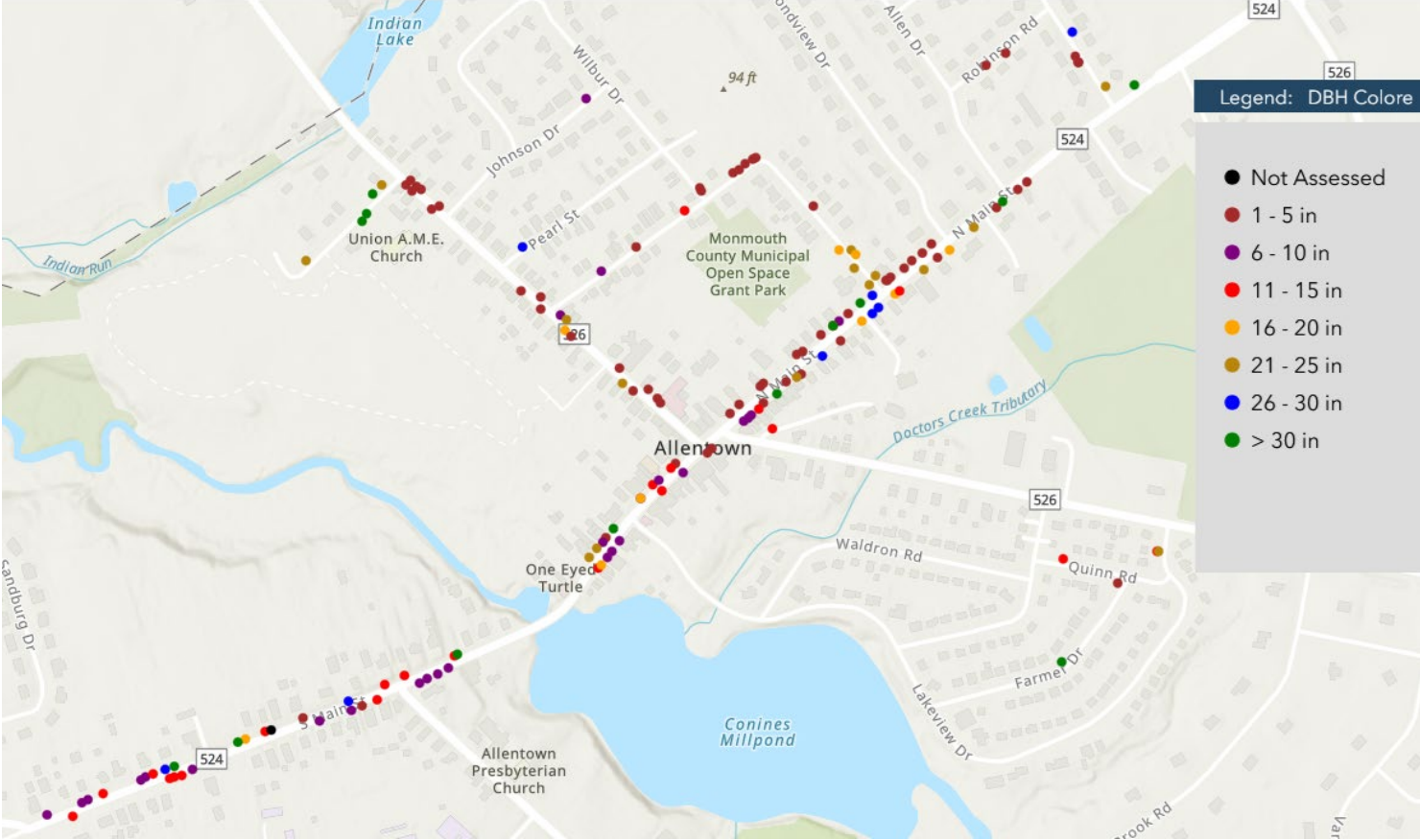
Street Trees by DBH (2” increments):

DBH	Total	Percent
0	2	1.18
2	43	25.29
4	12	7.06
6	12	7.06
8	13	7.65
10	14	8.24
12	12	7.06
14	12	7.06
16	4	2.35
18	2	1.18
20	5	2.94
22	6	3.53
24	7	4.12
26	6	3.53
28	3	1.76
30	3	1.76
32	4	2.35
34	1	0.59
36	3	1.76
38	3	1.76
40	1	0.59
44	1	0.59
50	1	0.59
	170	100

Street Trees by Street:

Street	Total
S. Main	51
N. Main	53
Church	24
Boro	
ROW	42
	170

Street Trees by DBH/Location



Park Trees by Species:

Species	Total	Percent
Red maple (<i>Acer rubrum</i>)	16	11.27
Kousa dogwood (<i>Cornus kousa</i>)	13	9.15
Kwanzan cherry (<i>Prunus serrulata</i>)	12	8.45
Eastern white pine (<i>Pinus strobus</i>)	10	7.04
American elm (<i>Ulmus americana</i>)	7	4.93
River birch (<i>Betula nigra</i>)	5	3.52
Black cherry (<i>Prunus serotina</i>)	4	2.82
Eastern redbud (<i>Cercis canadensis</i>)	4	2.82
Star magnolia (<i>Magnolia stellata</i>)	4	2.82
Kentucky coffeetree (<i>Gymnocladus dioica</i>)	3	2.11
Littleleaf linden (<i>Tilia cordata</i>)	3	2.11
Black walnut (<i>Juglans nigra</i>)	3	2.11
Pin oak (<i>Quercus palustris</i>)	3	2.11
Gray birch (<i>Betula populifolia</i>)	3	2.11
apple spp (<i>Malus</i>)	3	2.11
Ginkgo (<i>Ginkgo biloba</i>)	2	1.41
Blue spruce (<i>Picea pungens</i>)	2	1.41
Honeylocust (<i>Gleditsia triacanthos</i>)	2	1.41
Baldcypress (<i>Taxodium distichum</i>)	2	1.41
American holly (<i>Ilex opaca</i>)	2	1.41
Paperbark maple (<i>Acer griseum</i>)	2	1.41
Sweetgum (<i>Liquidambar styraciflua</i>)	2	1.41
Sugar maple (<i>Acer saccharum</i>)	2	1.41
Willow oak (<i>Quercus phellos</i>)	2	1.41
Norway spruce (<i>Picea abies</i>)	2	1.41
Black locust (<i>Robinia pseudoacacia</i>)	2	1.41
plum spp (<i>Prunus</i>)	1	0.7
Atlas cedar (<i>Cedrus atlantica</i>)	1	0.7
White willow (<i>Salix alba</i>)	1	0.7
White fir (<i>Abies concolor</i>)	1	0.7
Deodar cedar (<i>Cedrus deodara</i>)	1	0.7
Sassafras (<i>Sassafras albidum</i>)	1	0.7
Amur maple (<i>Acer ginnala</i>)	1	0.7
Alaska cedar (<i>Chamaecyparis nootkatensis</i>)	1	0.7
Norway maple (<i>Acer platanoides</i>)	1	0.7
Douglas fir (<i>Pseudotsuga menziesii</i>)	1	0.7
Sycamore maple (<i>Acer pseudoplatanus</i>)	1	0.7
Callery pear (<i>Pyrus calleryana</i>)	1	0.7
Leyland cypress (<i>Cupressocyparis leylandii</i>)	1	0.7
Chinese elm (<i>Ulmus parvifolia</i>)	1	0.7
Saucer magnolia (<i>Magnolia x soulangiana</i>)	1	0.7
White oak (<i>Quercus alba</i>)	1	0.7

American beech (<i>Fagus grandifolia</i>)	1	0.7
Japanese zelkova (<i>Zelkova serrata</i>)	1	0.7
Southern magnolia (<i>Magnolia grandiflora</i>)	1	0.7
European beech (<i>Fagus sylvatica</i>)	1	0.7
Amur maackia (<i>Maackia amurensis</i>)	1	0.7
Franklin tree (<i>Franklinia alatomaha</i>)	1	0.7
Dawn redwood (<i>Metasequoia glyptostroboides</i>)	1	0.7
lagerstroemia spp (<i>Lagerstroemia</i>)	1	0.7
Northern red oak (<i>Quercus rubra</i>)	1	0.7
Green ash (<i>Fraxinus pennsylvanica</i>)	1	0.7
American hornbeam (<i>Carpinus caroliniana</i>)	1	0.7
	142	

Park Trees by Genus:

Genus	Total	Percent
Acer	23	16.2
Prunus	17	11.97
Cornus	13	9.15
Pinus	10	7.04
Betula	8	5.63
Ulmus	8	5.63
Quercus	7	4.93
Magnolia	6	4.23
Cercis	4	2.82
Picea	4	2.82
Tilia	3	2.11
Malus	3	2.11
Gymnocladus	3	2.11
Juglans	3	2.11
Fagus	2	1.41
Gleditsia	2	1.41
Ilex	2	1.41
Liquidambar	2	1.41
Robinia	2	1.41
Cedrus	2	1.41
Ginkgo	2	1.41
Taxodium	2	1.41
Lagerstroemia	1	0.7
Carpinus	1	0.7
Fraxinus	1	0.7
Metasequoia	1	0.7
Pyrus	1	0.7
Sassafras	1	0.7
Zelkova	1	0.7
Abies	1	0.7
Chamaecyparis	1	0.7
Cupressocyparis	1	0.7
Franklinia	1	0.7
Pseudotsuga	1	0.7
Salix	1	0.7
Maackia	1	0.7
	142	

Park Trees by Family:

Family	Total	Percent
Aceraceae	23	16.2
Rosaceae	21	14.79
Pinaceae	18	12.68
Cornaceae	13	9.15
Fabaceae	12	8.45
Ulmaceae	9	6.34
Betulaceae	9	6.34
Fagaceae	9	6.34
Magnoliaceae	6	4.23
Cupressaceae	5	3.52
Juglandaceae	3	2.11
Malvaceae	3	2.11
Ginkgoaceae	2	1.41
Aquifoliaceae	2	1.41
Altingiaceae	2	1.41
Theaceae	1	0.7
Lauraceae	1	0.7
Lythraceae	1	0.7
Oleaceae	1	0.7
Salicaceae	1	0.7
	142	

Park Trees by Family/Genus/Species

Family	Genus	Species	Total
Aceraceae	Acer	Amur maple (<i>Acer ginnala</i>)	1
Aceraceae	Acer	Norway maple (<i>Acer platanoides</i>)	1
Aceraceae	Acer	Paperbark maple (<i>Acer griseum</i>)	2
Aceraceae	Acer	Red maple (<i>Acer rubrum</i>)	16
Aceraceae	Acer	Sugar maple (<i>Acer saccharum</i>)	2
Aceraceae	Acer	Sycamore maple (<i>Acer pseudoplatanus</i>)	1
Altingiaceae	Liquidambar	Sweetgum (<i>Liquidambar styraciflua</i>)	2
Aquifoliaceae	Ilex	American holly (<i>Ilex opaca</i>)	2
Betulaceae	Betula	Gray birch (<i>Betula populifolia</i>)	3
Betulaceae	Betula	River birch (<i>Betula nigra</i>)	5
Betulaceae	Carpinus	American hornbeam (<i>Carpinus caroliniana</i>)	1
Cornaceae	Cornus	Kousa dogwood (<i>Cornus kousa</i>)	13
Cupressaceae	Chamaecyparis	Alaska cedar (<i>Chamaecyparis nootkatensis</i>)	1
Cupressaceae	Cupressocyparis	Leyland cypress (<i>Cupressocyparis leylandii</i>)	1
Cupressaceae	Metasequoia	Dawn redwood (<i>Metasequoia glyptostroboides</i>)	1
Cupressaceae	Taxodium	Baldcypress (<i>Taxodium distichum</i>)	2
Fabaceae	Cercis	Eastern redbud (<i>Cercis canadensis</i>)	4
Fabaceae	Gleditsia	Honeylocust (<i>Gleditsia triacanthos</i>)	2
Fabaceae	Gymnocladus	Kentucky coffeetree (<i>Gymnocladus dioicus</i>)	3
Fabaceae	Maackia	Amur maackia (<i>Maackia amurensis</i>)	1
Fabaceae	Robinia	Black locust (<i>Robinia pseudoacacia</i>)	2
Fagaceae	Fagus	American beech (<i>Fagus grandifolia</i>)	1
Fagaceae	Fagus	European beech (<i>Fagus sylvatica</i>)	1
Fagaceae	Quercus	Northern red oak (<i>Quercus rubra</i>)	1
Fagaceae	Quercus	Pin oak (<i>Quercus palustris</i>)	3
Fagaceae	Quercus	White oak (<i>Quercus alba</i>)	1
Fagaceae	Quercus	Willow oak (<i>Quercus phellos</i>)	2
Ginkgoaceae	Ginkgo	Ginkgo (<i>Ginkgo biloba</i>)	2
Juglandaceae	Juglans	Black walnut (<i>Juglans nigra</i>)	3
Lauraceae	Sassafras	Sassafras (<i>Sassafras albidum</i>)	1
Lythraceae	Lagerstroemia	lagerstroemia spp (<i>Lagerstroemia</i>)	1
Magnoliaceae	Magnolia	Saucer magnolia (<i>Magnolia x soulangiana</i>)	1
Magnoliaceae	Magnolia	Southern magnolia (<i>Magnolia grandiflora</i>)	1
Magnoliaceae	Magnolia	Star magnolia (<i>Magnolia stellata</i>)	4
Malvaceae	Tilia	Littleleaf linden (<i>Tilia cordata</i>)	3
Oleaceae	Fraxinus	Green ash (<i>Fraxinus pennsylvanica</i>)	1
Pinaceae	Abies	White fir (<i>Abies concolor</i>)	1
Pinaceae	Cedrus	Atlas cedar (<i>Cedrus atlantica</i>)	1
Pinaceae	Cedrus	Deodar cedar (<i>Cedrus deodara</i>)	1
Pinaceae	Picea	Blue spruce (<i>Picea pungens</i>)	2
Pinaceae	Picea	Norway spruce (<i>Picea abies</i>)	2

Pinaceae	Pinus	Eastern white pine (<i>Pinus strobus</i>)	10
Pinaceae	Pseudotsuga	Douglas fir (<i>Pseudotsuga menziesii</i>)	1
Rosaceae	Malus	apple spp (<i>Malus</i>)	3
Rosaceae	Prunus	Black cherry (<i>Prunus serotina</i>)	4
Rosaceae	Prunus	Kwanzan cherry (<i>Prunus serrulata</i>)	12
Rosaceae	Prunus	plum spp (<i>Prunus</i>)	1
Rosaceae	Pyrus	Callery pear (<i>Pyrus calleryana</i>)	1
Salicaceae	Salix	White willow (<i>Salix alba</i>)	1
Theaceae	Franklinia	Franklin tree (<i>Franklinia alatamaha</i>)	1
Ulmaceae	Ulmus	American elm (<i>Ulmus americana</i>)	7
Ulmaceae	Ulmus	Chinese elm (<i>Ulmus parvifolia</i>)	1
Ulmaceae	Zelkova	Japanese zelkova (<i>Zelkova serrata</i>)	1
			142

Park Trees by DBH:

DBH	Total	Percent
0	5	3.52
2	71	50
4	10	7.04
6	5	3.52
8	10	7.04
10	8	5.63
12	12	8.45
14	6	4.23
16	7	4.93
18	5	3.52
20	2	1.41
50	1	0.7
142		

Appendix 2. Protection/Replacement of Tree Ordinance

Can be viewed at <https://allentownboronj.com/vertical/sites/%7B7748EEEEB-2391-4653-8B6A-4A64C85A6D79%7D/uploads/doc08576120240710143616.pdf>

Appendix 3. Shade Tree Commission Establishing Ordinance

Can be viewed at https://allentownboronj.com/vertical/sites/%7B7748EEEEB-2391-4653-8B6A-4A64C85A6D79%7D/uploads/Ordinance_03-2020.pdf